

FE



April is definitely a blink and you miss it month, with us having missed half of it for the Easter Holidays 😊 We started back with some Monday visits to Alice Holt where we were supposed to be practicing our cycling ready for our expedition... week one hit a snag when the Accessible Cycling crew forgot we were coming so we took advantage of the beautiful weather to take a hike! This was great practice for the expedition walks, despite a few blisters here and there, and we made up for the cycling the following week with lots of practice. On Tuesdays we have been back with the lovely Youth Workers at the Community Centre where we created some great art work and made some decorations ready for our Coronation Celebrations in May. Our first Wednesday saw a visit from a new student who will hopefully be joining us in September, we shopped at Tesco and then cooked a lovely lunch... it was great to get to know him and show him what we get up to. On Thursday we were back at Park View Adult Day Services where we are beginning to use the centre in the same way the Day Users do... on arrival we choose our activities and then go to our choices... some of us worked outside while others chose indoor activities, and others did some baking. It was good to experience how our days would be if we went there... and lots of us plan to do just that in September! On Friday we continued with our DoFE Awards... we have all been signed off on some of our sections and now it is time to concentrate on the Expedition coming up in May. We practiced putting up tents and lighting Trangias in preparation... we still managed to fit in the FE Café and Station Litter Picking though... as those students starting out on their Gold Awards need to keep going with these.



Employee of the Month



Sean

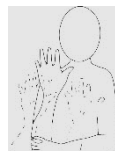
Here are a few of the signs we have been using this month...



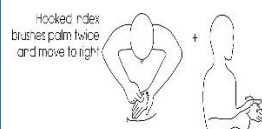
Bicycle



Forest



Shopping List



Park



Walk

