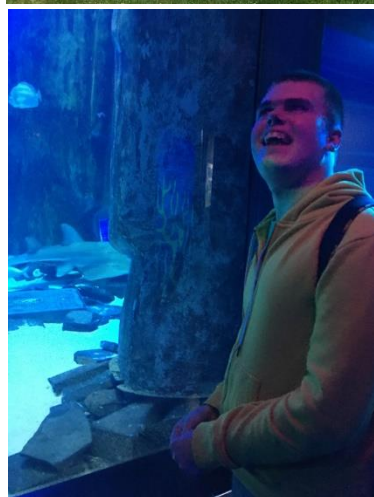


FE



What a jam-packed month May has been... starting off the month was the first of our residential visits, 3 days at Foxlease Girlguiding Centre Lyndhurst in the New Forest. We stayed in enormous Bell Tents and wore ourselves out with all our activities of walking, canoeing and cycling with the amazing PedALL Inclusive Cycling team who fully supported us to cycle 9 miles a day! We also cooked our own meals on Trangia stoves and enjoyed beautiful sunshine for the majority of the trip. Our DoFE Bronze Award group have now completed their final Section and are all set to progress on to the Silver Award 😊 Throughout the month we continued to attend the Forest Community Centre and Park View Adult Day Services, as well as shopping at Tesco and cooking our own lunches on Wednesdays and bacon rolls for staff on Fridays. The brighter weather has also increased our workload at Farnham Station on Fridays as the sunshine seems to have increased the amount of litter in the area. Along with our excellent residential we also went on our Big London Day Out in the last week of the half term... this was so exciting for everyone and we packed a whole lot into the day. Starting at Farnham Station we took the SWR train into Waterloo where we had to squeeze onto a very busy Jubilee Line tube train to North Greenwich. Once at the O2 we enjoyed our lunch in the sunshine before taking flight on the IFS Cloud cable car, enjoying a 360 trip of the sights before making our way down to the pier to board the Thames Clipper. We travelled along the River Thames and under Tower Bridge to Westminster Pier, getting off near Big Ben and walking across the bridge to enjoy a relaxing time in SeaLife London Aquarium before a fish and chip tea under the London Eye. Phew!



Employee of the Month

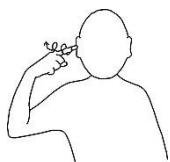


Elliot

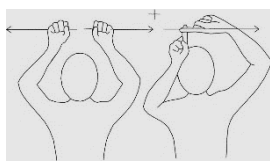
Here are a few of the signs we have been using this month...



London



Cable Car



Shark



Thumb moves up/down to touch palm



Escalator



Boat

